



## M/V ROMA

9083134 / PALAU / 1995

### GENERAL

|                |                                      |
|----------------|--------------------------------------|
| - IMO:         | 9083134                              |
| - Flag:        | Palau                                |
| - Build:       | 1995                                 |
| - Call Sign:   | T8A2207                              |
| - Class:       | Polish Class PRS – IACS              |
| - Shipbuilder: | YVC Ysselwerf B.V. – The Netherlands |

### TONNAGE

|                            |                |
|----------------------------|----------------|
| - DWT (without tweendeck): | about 5.199 mt |
| - GT/NT:                   | 4.962/1.488    |
| - GT/NT Suez:              | 4.871/3.906    |
| - NT Panama:               | 4.228          |

### DIMENSIONS

|                                    |         |
|------------------------------------|---------|
| - LOA:                             | 95,72 m |
| - LBP:                             | 87,55 m |
| - Draft summer SW:                 | 6,81 m  |
| - Beam o.a (Hull):                 | 18,35 m |
| - Air draft above keel, gear down: | 40,00 m |

### HOLDS

|                                    |                         |
|------------------------------------|-------------------------|
| - Number of holds:                 | 1                       |
| - Dimensions lowerhold:            | 47,28 x 13,95 x 3,650 m |
| - Dimensions tweendeck:            | 66,98 x 13,95 x 5,304 m |
| - Hold total height:               | 9,75 m                  |
| - Height in lowerhold & tweendeck: | see cross section       |

### HATCHES

|                        |                     |
|------------------------|---------------------|
| - Main deck hatches:   | 1                   |
| - Free deckspace abt.: | 1150 m <sup>2</sup> |

### CAPACITY

|                         |                      |
|-------------------------|----------------------|
| - Bale with tweendecks: | 7.167 m <sup>3</sup> |
|-------------------------|----------------------|

### TANK TOP STRENGTHS

|                 |                           |
|-----------------|---------------------------|
| - Tanktop:      | 12,0 mtons/m <sup>2</sup> |
| - Tween deck:   | 3,5 mtons/m <sup>2</sup>  |
| - Hatch covers: | 3,5 mtons/m <sup>2</sup>  |

### GEAR

|  |
|--|
| - 2 x 250 mt   |
| - Combinable up to 500 mt SWL subject to dimensions and hook points of unit to be carried. |
| - Auxiliary hoist 2 x 25 mt  |

### MACHINERY/PROPELLER

|   |
|---|
| - MAK 6M32, output: 2.640 kW on 600 rpm |
|---|

### GENERATORS/BOWTHRUSTER

|  |
|--|
| - Thrustmaster JT 800/42 Jet bowthruster, 475 KW |
|--|

### SPEED

|                  |
|------------------|
| - About 14 Knots |
|------------------|

### TANK CAPACITY

|                         |                    |
|-------------------------|--------------------|
| - Heavy fuel oil (HFO): | 540 m <sup>3</sup> |
| - Diesel oil (MDO):     | 110 m <sup>3</sup> |
| - Fresh Water:          | 110 m <sup>3</sup> |

### SPECIAL FEATURES

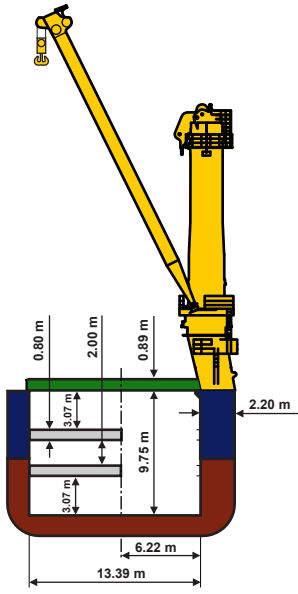
|                      |
|----------------------|
| - Lakes fitted       |
| - Stability pontoons |

(Details are believed to be correct, but are not guaranteed.)

# M/V ROMA

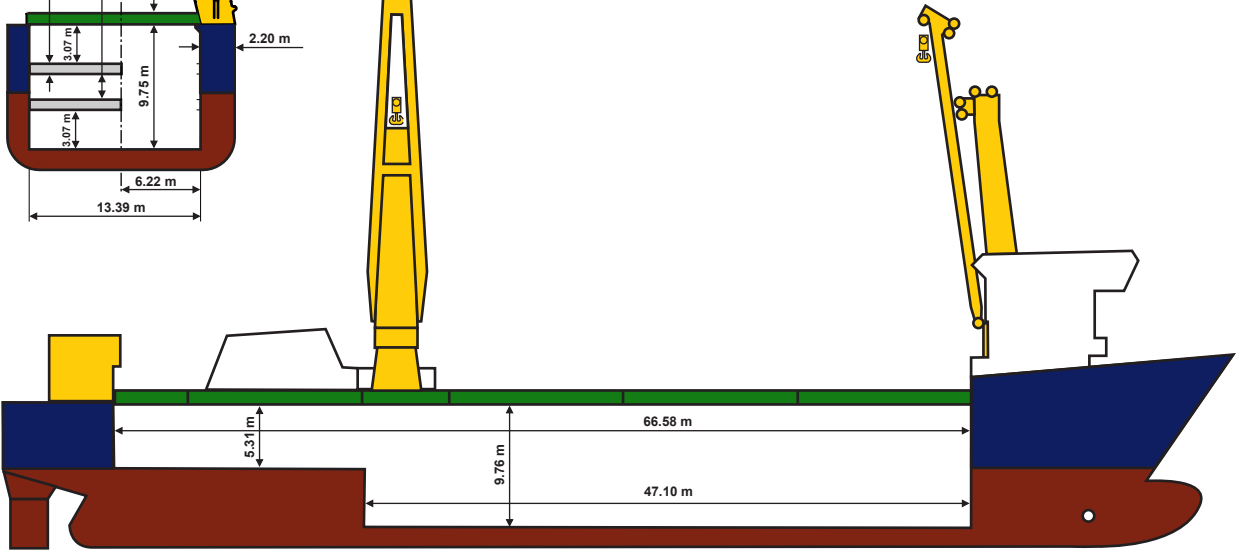
Details believed to be correct, but are given without guarantee

## 500T COMBINED LIFTING CAPACITY

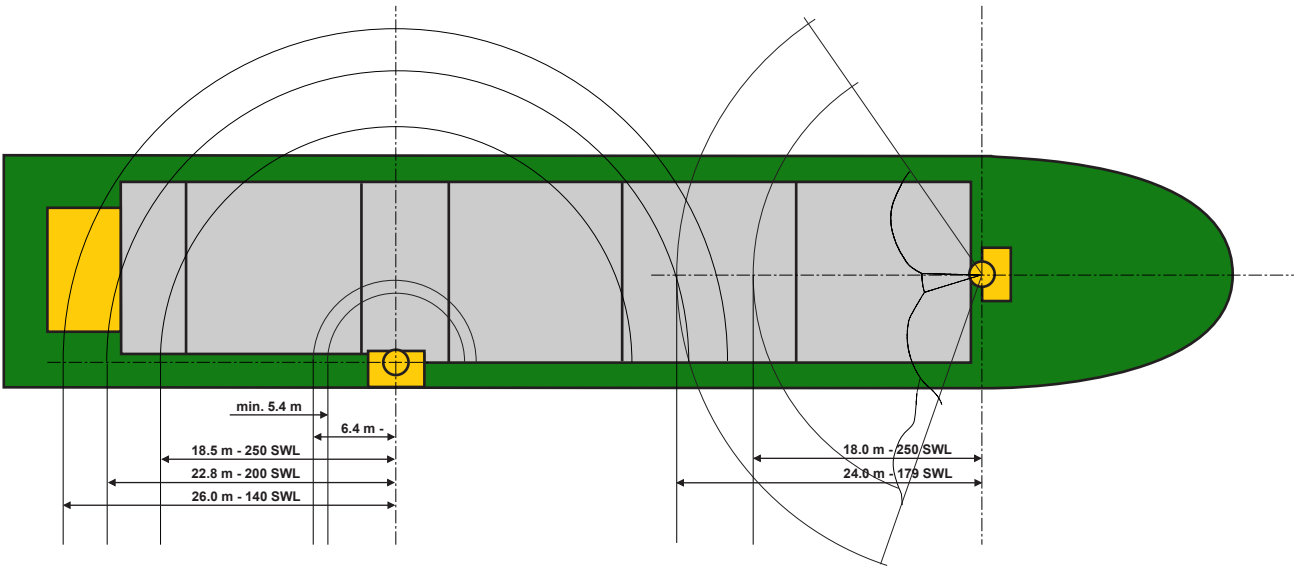


| HEIGHT IN LOWERHOLD AND TWEENDECK |      |
|-----------------------------------|------|
| 3068                              | 5808 |
| 3228                              | 5728 |
| 3368                              | 5648 |
| 3506                              | 5448 |
| 3646                              | 5308 |
| 3786                              | 5168 |
| 3926                              | 5028 |
| 4086                              | 4888 |
| 4206                              | 4748 |
| 4346                              | 4608 |
| 4486                              | 4468 |
| 4626                              | 4328 |
| 4766                              | 4188 |
| 4906                              | 4048 |
| 5046                              | 3908 |
| 5186                              | 3768 |
| 5326                              | 3628 |
| 5466                              | 3488 |
| 5606                              | 3348 |
| 5746                              | 3208 |
| 5886                              | 3068 |
|                                   | 9754 |

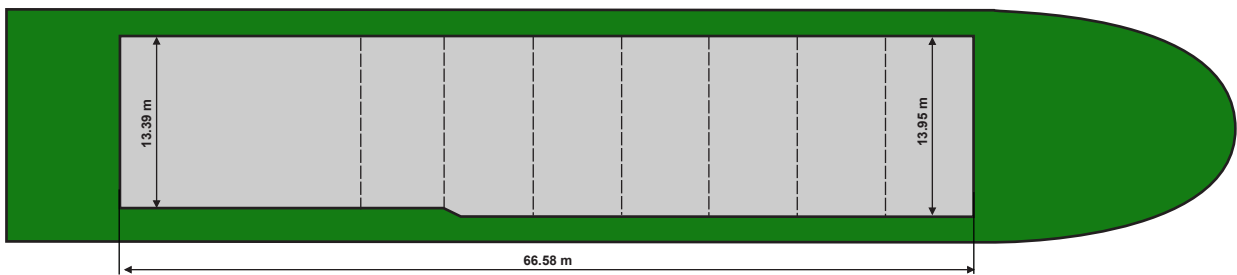
## PROFILE



## DECK



## TWEEN DECK



## TANKTOP

