



M/V SEMELA

9226695 / COMORES / 2000

GENERAL

- IMO: 9226695
- Flag: Comores
- Build: 2000
- Call Sign: D6A2058
- Class: GL + Multipurpose cargo ship strengthened for heavy cargo – Solas II2
- Shipbuilder: Peene Werft

TONNAGE

- DWT: about 7.000 mt
- GT/NT: 6.275/3.116
- GT/NT Suez: 6.386,23/5.114,86
- GT Panama: 5.584

DIMENSIONS

- LOA: 118,00 m
- LBP: 111,20 m
- Draft summer SW: 7,25 m
- Breadth moulded: 19,7 m

HOLDS

- Number of holds: 1
- Capacity: 9.600 m³
- Boxed – tween-deck hoistable in 3 different heights

TANK TOP STRENGTHS

- Tanktop: 12,0 mtons/m²
- Tween deck: 3,5 mtons/m²
- Main deck: 2,5 mtons/m²

GEAR

- 2 x 150 mt
- Combinable up to 300 mt SWL subject to dimensions and hook points of unit to be carried.

SPEED

- About 16.5 Knots

TANK CAPACITY

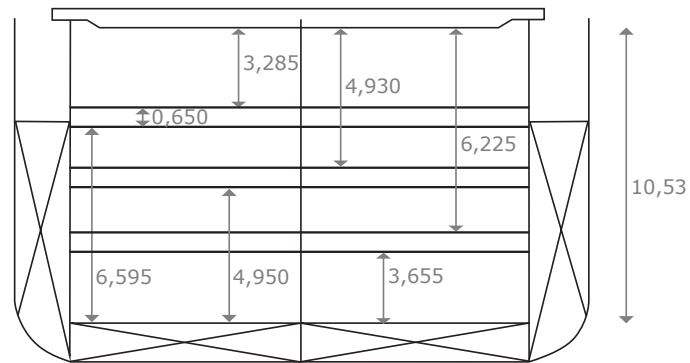
- Heavy fuel oil (HFO): 650 m³
- Fresh water: 99 m³
- Ballast water: 3.823 m³

SPECIAL FEATURES

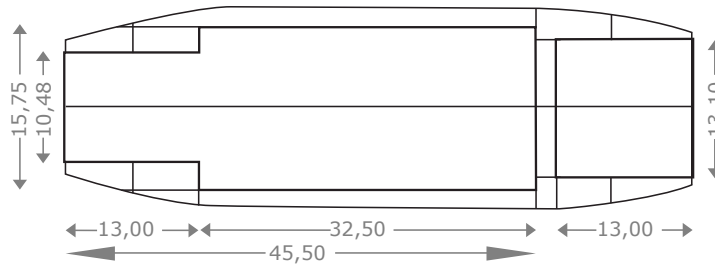
- Container capacity: 487
- Holds: 6 air changes/hour

(Details are believed to be correct, but are not guaranteed.)

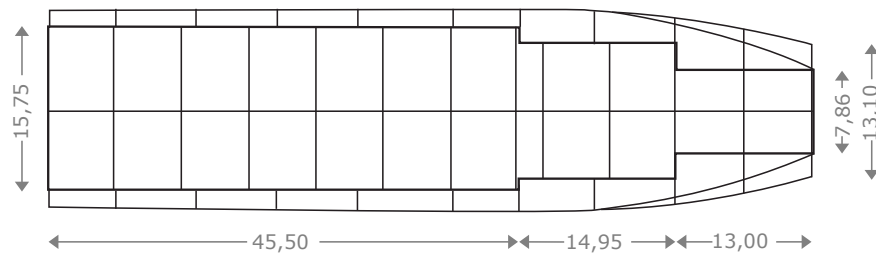
M/V SEMELA



TANK TOP



TWEEN DECK



WEATHER DECK

